



# Chroma-Q™ Color Force 48 / 72



## Mighty Output LED Battens

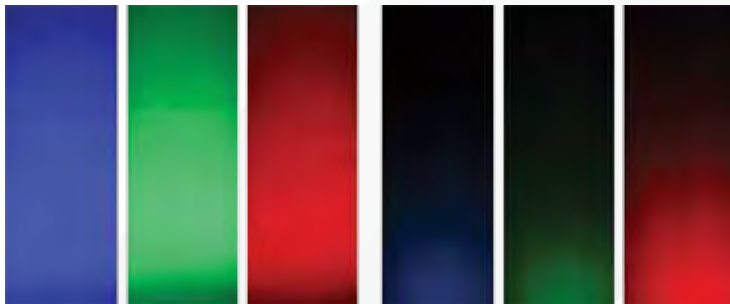
The new Chroma-Q™ Color Force™ LED batten range is a brute of a light. The super bright fixture easily washes up to 8m / 26 ft. In addition, our advanced ColorSure™ RGBA colour and control management technologies together give you a radically increased colour palette, enhanced colour consistency, a high CRI of 92 and theatrical grade dimming, all in the same fixture.

### Mighty Output

The Color Force offers extreme light output, lighting an 8m / 26ft drop cyclorama in your choice of colour.

Optional accessories include a Cyc lens plate for up to 5m / 20ft drop and a Border lens plate for general purpose wash applications.

Opposite demonstrates the Color Force output compared to a traditional 1kW cyc flood. Identical camera settings were used in the comparative photos.



Color Force Output

Traditional 1kW Cyc Flood Output

### Power across the Spectrum

The Color Force offers massive output across the spectrum, ensuring both vivid saturates and subtle palette colours are available from a single fixture.

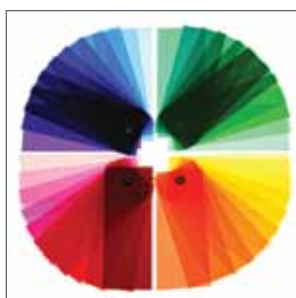
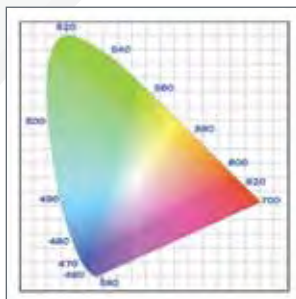
It provides a single fixture solution for concert touring, corporate events, exhibitions, TV and theatre.

The Chroma-Q RGBA engine has been developed to deliver an incredible CRI of 92, for true colour balance across the spectrum.

Each 1,000 lumen engine includes ColorSure technology for enhanced colour consistency across cells and fixtures.

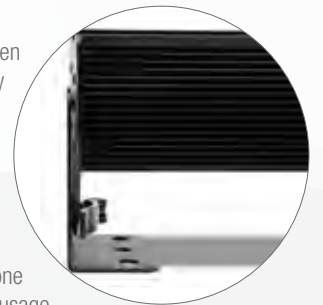
### Optic

The Color Force custom optical design provides a smooth, uniform output with outstanding smooth colour blend across the spectrum.



### Practical & Mechanical

On the outside, the Color Force has been designed to provide maximum versatility and ease of use. The built-in power supply, hidden quick release fixings requiring no tools, and mains power / DMX in at one end and out the other provide fast deployment and simple cable management.



The Color Force also features stand-alone Master and Slave modes for additional usage possibilities, flat end plates for seamless wall-washing and a rugged extruded aluminium body.

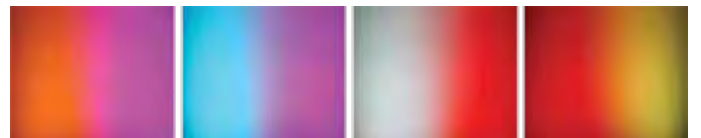
### Control

The Color Force features smooth, theatrical grade dimming and intuitive colour control for all console types. Advanced software enables industry standard 3 channel RGB and HSI control for each ColorSure light engine. A full range of flicker-free modes are also included.



### Effects

With separate RGBA control every 150mm / 6" and a comprehensive built-in effects engine, the Color Force offers new possibilities in cyclorama effects.



## Key Features

- High CRI of 92
- Theatrical grade dimming
- Extremely smooth, uniform wash
- Massive output across the spectrum
- Radically increased RGBA colour palette
- Choice of 1.8m / 6ft (72) and 1.2m / 4ft (48) lengths
- Super bright fixture, easily washes up to 8m / 26 ft
- Saturate and pastel colours available from a single fixture



## Color Force 48 / 72 Technical Specification

Product Code 48 / 72 (with Border lens kit) (with Cyc lens kit)	CHCF48NFRGBA / CHCF72NFRGBA CF48BDRRGBA / CF72BDRRGBA CF48CYCRGBA / CF72CYCRGBA
Net Dimensions 48	1,181mm x 182mm x 177mm / 46.5" x 7.25" x 7"
Net Dimensions 72	1,759mm x 182mm x 177mm / 69.25" x 7.25" x 7"
Net Weight 48	15kgs / 33lbs
Net Weight 72	22kgs / 48lbs
Power Input Rating 48	100-240V AC, 50-60 Hz, 400VA
Power Input Rating 72	100-240V AC, 50-60 Hz, 700VA

Control Protocol	ANSI E1.11 USITT DMX 512-A
Cooling System	Forced - 2x fans
Construction	Anodised aluminium extrusion
Built-In Hardware	Quick release lever for tilt adjustment
IP Rating	IP20
Approvals	CISPR 22 :2006/EN55022 :2006 & CISPR 24 :1997/ EN55024 :1998, ICES-003 :2004 & FCC Part 15 Subpart B: 2007, CSA C22. No. 166-M1983:R2008 UL 1573:2003; UL 8750

## Control & Photometric

LEDs 48	8 LED engines, 24 (6 x RGBA) LEDs, 192 total LEDs
LEDs 72	12 LED engines, 24 (6 x RGBA) LEDs, 288 total LEDs
Control Modes 48 / 72	31 / 43 channels Fx HSI 24 / 36 channels HSI 24 / 36 channels RGB (*Magic Amber) 32 / 48 channels RGBA 33 / 49 channels sRGBI (*Magic Amber) 9 / 9 channels Fx HSI 3 / 3 channels HSI 3 / 3 channels RGB 4 / 4 channels RGBA 5 / 5 channels sRGBI (*Magic Amber) 1 / 1 channel DMX Look Select
Dimming Curve	Theatrical

Variable Effects Engine	Yes
Lumen Output 48 / 72	White 8,000 / 12,000 hot lumens (prelim.)
Optics	Specialised close focus lens
Beam Angle (with optional Cyc lens) (with optional Border lens)	23° (approx.) 80 x 30° (approx.) 60° (approx.)
Beam Distribution	Asymmetrical direct illumination
CCT	Adjustable 1,000 - 10,000K
CRI	92
Colour Gamut	Performance enhanced
Lamp Life	L70 at 50,000 hours

## Accessories

CHCFBL48	Border lens for 48
CHCFCL48	Cyc lens for 48

CHCFBL72	Border lens for 72
CHCFCL72	Cyc lens for 72

\*Magic Amber is the term used for the unit's ability to bring in amber when mixing colours that require it.

For the latest news and information on the Chroma-Q range, visit [www.chroma-q.com](http://www.chroma-q.com)